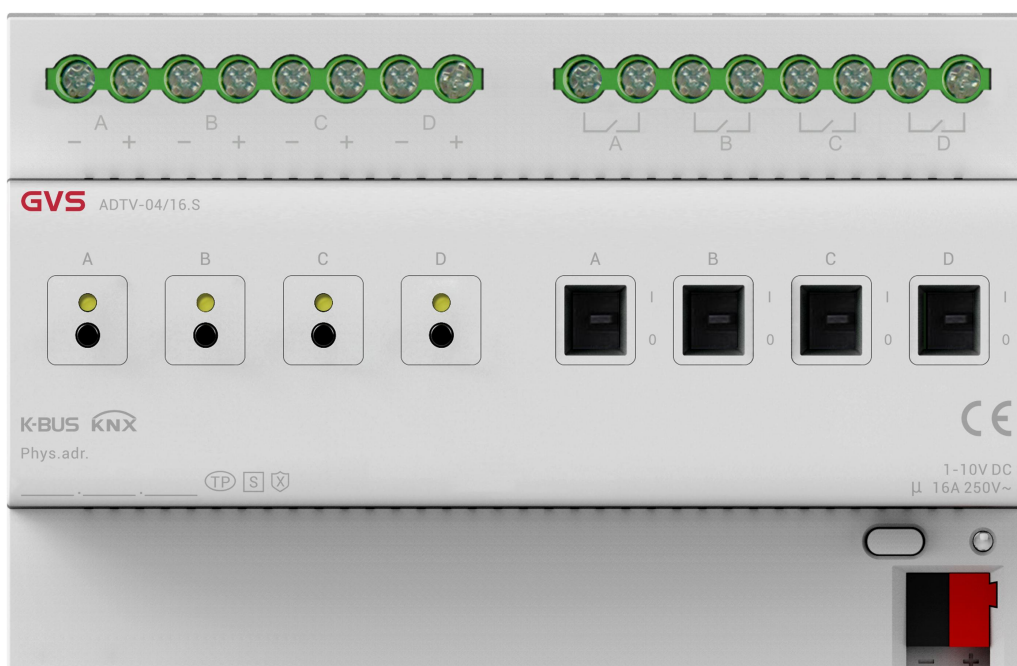


User Manual

K-BUS 1-10V Dimming Controller with Secure, 4-Fold_V1.1

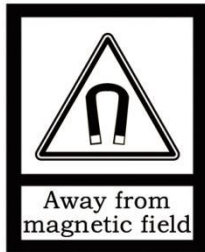
ADTV-04/16.S



KNX/EIB Home and Building Control System

Attentions

1. Please keep devices away from strong magnetic field, high temperature, wet environment;



2. Please do not fall the device to the ground or make them get hard impact;



3. Please do not use wet cloth or volatile reagent to wipe the device;



4. Please do not disassemble the devices.

Contents

Chapter 1 Introduction	1
Chapter 2 Technical characteristic	3
Chapter 3 Dimension and Connection Diagram	4
3.1. Dimension drawing	4
3.2. Connection Diagram	4
Chapter 4 Application Programming Introduction	6
4.1. Switch	6
4.2. Relative dimming	6
4.3. Absolute dimming	7
4.4. Status Report	7
4.5. Scene	7
4.6. Preset Value	8
4.7. Staircase Lighting Function	8
4.8. Reset	9
4.9. Normal operation signs	9
Chapter 5 Parameters Setting Description in the ETS	10
5.1. KNX Secure	10
5.2. Parameter window "General"	14
5.3. Introduction of channel function	15
5.4. Parameter window "Output X"	15
5.5. Parameter window "Normal Dimming"	17
5.5.1. Parameter window "X: Dimming general"	17
5.5.2. Parameter window "X: Dimming"	19
5.5.3. Parameter window "X: Scene page"	22
5.5.4. Parameter window "X: Preset"	24
5.6. Parameter window "Staircase Lighting"	26
Chapter 6 Communication Object Description	28
6.1. Communication object of "General"	28
6.2. Dimming general communication object	28
6.3. Scene communication object	30
6.4. Preset Value communication object	31
6.5. Staircase Lighting communication object	32

Chapter 1 Introduction

1-10V Dimming Controller with Secure (hereinafter referred to as Dimmer) is a device dimming the luminaries directly by the data in the memory, and the data is processed in advance in the programming software according to the distribution characteristics of the luminaries' brightness. The control circuit of dimmer transfers the brightness data value to output voltage or current to control the brightness of the luminaries.

The Dimmer with standard DC 1-10V control interface, can be connected with electronic dimming ballast/EVG or other devices with 1-10V interface to control the lights, such as dimming, scenes, switching and so on. It has 4 independent channels.

You can build the various scenes with dimmer, such as watch movie, entertainment, dinner and rest, and so on; it's brightness value can be set as any value (1-100%); it is able to set the duration time to dim up or down to the target brightness value and the gradual change speed to extend the luminaries life and save energy and so on.

The Dimmer is a modular installation device in power distribution boards or closed compact boxes for fixed on 35mm DIN rails, which adopts screw terminals to achieve electrical connection; the connection to the KNX bus is established via a bus connecting terminal. There is no additional voltage input. It is able to use the Engineering Tool Software ETS (ETS5 version or more) with a knxprod file to allocate the physical address and set the parameters.

This manual provides the detailed technical information about dimmer, not only the installation and programming details, but also the usage explanation in actual application.

The following list provides a functional overview:

- ◆ **Switching**
- ◆ **Relative dimming**
- ◆ **Absolute dimming**
- ◆ **Status report**
- ◆ **Setting 15 scenes**
- ◆ **Staircase lighting function**
- ◆ **Preset value and modify preset value functions**

- ◆ **Bus recovery (or reset) function**
- ◆ **Switch/relative dimming via manual buttons**
- ◆ **KNX Data Secure**

There is an electronic manual operation function in the normal dimming mode, but it is invalid in the staircase lighting mode.

Switch via a short operation of the electronic manual buttons, relative dimming via a long operation, and in the case of the bus voltage fail the manual operation is invalid.

There is also mechanical manual operation function, and it can switch on or off the output at any time.

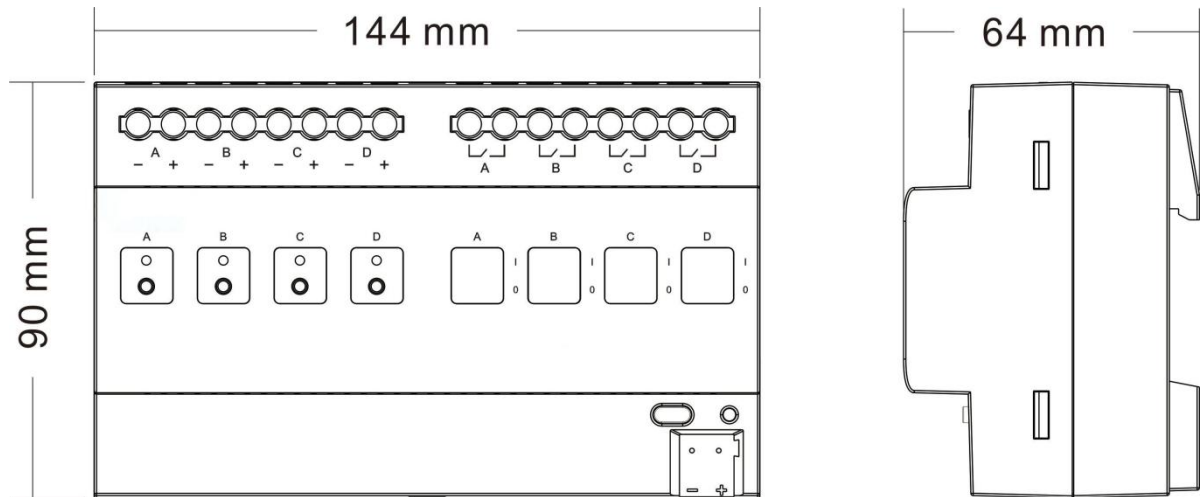
Note: Some lights cannot be turned off completely by dimming. In this case, you can turn off the lights via switching.

Chapter 2 Technical characteristic

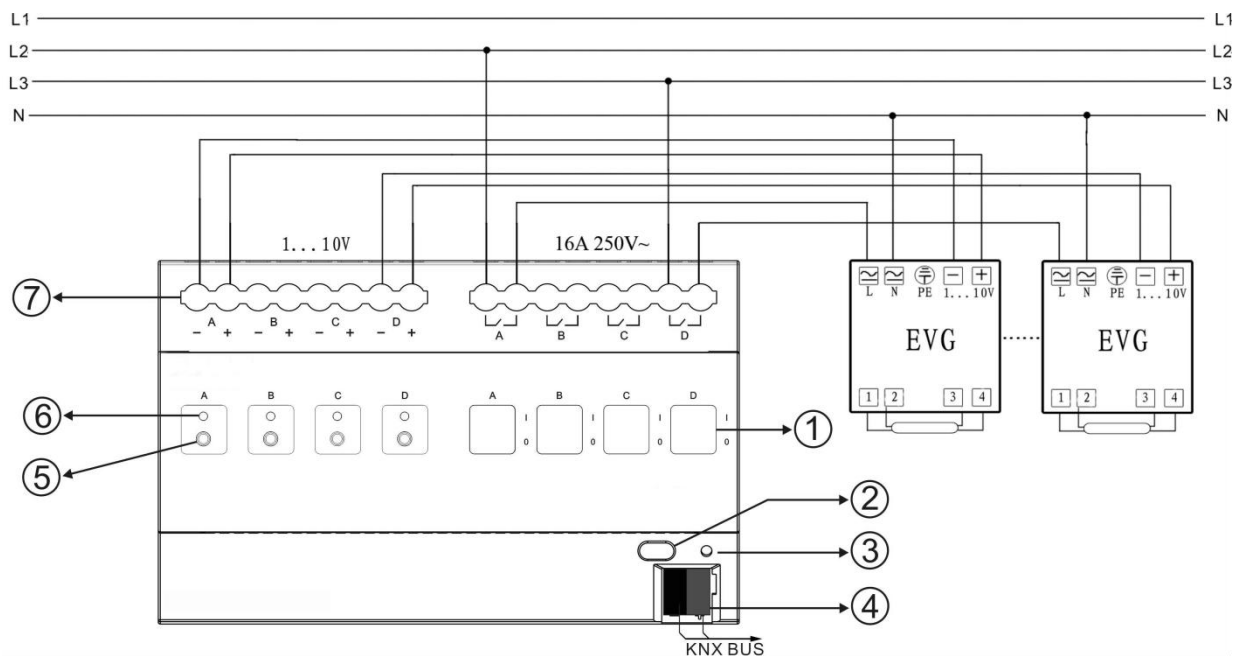
Power Supply	Bus voltage	21-30V DC, via the KNX bus
	Bus current	<9mA/24V, <8.5mA/30V
	Bus consumption	<255mW
	Charging current	<20mA
Output	Number	4 channel switching/dimming
	Output voltage	1~10V DC (passive), max.100mA per channel
	Switch current	16A /250V AC
Connections	KNX	KNX bus connection terminal
	Outputs	Using 16 screw terminals, 8 terminals to connect 4 channels of 1-10V common ground and 1-10V output 8 terminals to connect 4 channels of switch
Operation and display	Button and red LED	For assigning the physical address
	Green LED flashing	Indicate the application layer running normally
Temperature	Operation	-5 °C ... + 45 °C
	Storage	-25 °C ... + 55 °C
	Transport	-25 °C ... + 70 °C
Ambient	Humidity	<93%, except dewing
Type of protection	IP 20	
Mounting	On 35mm DIN rail	
Dimension	144 × 90 × 64 mm	
Weight	0.5kg	

Chapter 3 Dimension and Connection Diagram

3.1. Dimension drawing



3.2. Connection Diagram



- ① Mechanical manual operation
- ② Programming button
- ③ Red LED for entering the physical address, green LED flashing for application layer running normally

- ④ Bus connection terminal
- ⑤ Electronical manual button
- ⑥ LEDs of indicating output status for each channel, LED off indicates that the channel is off, while LED on indicates that the channel is on
- ⑦ Output terminals

Reset the device to the factory configuration: press the programming button and hold for 4 seconds then release, repeat the operation for 4 times, and the interval between each operation is less than 3 seconds

Chapter 4 Application Programming Introduction

Application	Maximum of communication objects	Maximum number of group addresses	Maximum number of associations	Secure group addresses
Dimming Controller with Secure, 4-Fold, 1-10V 16A/2.0	45	100	100	100

It is able to set different parameters to every output channel, and control various targets by modifying the setup of the internal parameters.

4.1. Switch

The output can be switched ON or OFF by 1 bit data. It is able to set the brightness value as the last one or a defined one (1%-100%) when switching on the luminaries. It is able to set a delay time (changing time) to dim UP the luminaries or dim UP gradually in the default period. When receiving the *OFF* message, the dimmer will be switched off immediately, or dim DOWN gradually after a delay time (changing time) or in the default changing period.

4.2. Relative dimming

4 data bits control: the relative dimming command means it is possible to dim UP or DOWN to the needed brightness value during the set brightness threshold range. It is only valid to dim UP when the brightness value is smaller than the low threshold value and dim DOWN when the brightness value is greater than the high threshold value. It is also able to set whether to switch on the luminaries by the message "*Dim UP to a certain value*" when the output is 0 by this function. The relative dimming is used to control the relative changes of the brightness by 4 data bits: the lowest 3 bits are controlling-bit and the highest bit is---- "1" means dim UP, "0" means dim DOWN.

Explanation of setting relative dimming: (1-7: dim DOWN; 0-8 remain unchanged (stop dimming); 9-15 dim UP)

Parameter value	0	1	2	3	4	5	6	7
Dim DOWN	Unchange/stop dimming	255	128	64	32	16	8	4

Parameter value	8	9	10	11	12	13	14	15
Dim UP	Unchange/stop dimming	255	128	64	32	16	8	4

4.3. Absolute dimming

8 data bits control: it is able to dim to the needed brightness value by changing the brightness parameters. The setting of the parameters is similar as relative dimming with the brightness value range: one low threshold value and one high threshold value. And it is not allowed to change the brightness value beyond the set range, the max. range is from 0 to 255. This function offers the possibility to dim UP or DOWN to 0 gradually to the target value by setting the delay time or the default time.

The high and low threshold value limits the total output of the dimmer; any brightness value beyond the range is not valid.

When the output is 0, it is able to set switching off the luminaries or remaining to a lower brightness value; and also in this status it is optional to switch on the luminaries by receiving the message "Absolute dimming".

4.4. Status Report

1 data bit: the dimmer offers the possibility whether sending the latest brightness value report of the controlled target and the changed report of the switch status to the BUS.

4.5. Scene

8 data bits control: the dimmer offers 15 (1-15) scenes for selection. It is possible to set ONE brightness value and the gradual change time of ON for each scene. After setting, it is easy to call any favorite scene. 1 in the highest bit of the scene command it means "saving" command, to save the current brightness value to the relevant scene.

4.6. Preset Value

The dimmer can preset scene, the object directly through 1bit data to transfer the preset scene or through 1bit data to let favorite scene to replace original preset scene. There are two preset values per output, there are two brightness values can be transfer for each preset value. Such as in theater, we need a relatively bright lighting effect when coming in, we can through transfer the first brightness value to be achieved this effect, when the movie starts playing, we need a relatively dark lighting effect, we can through transfer the second brightness value to be achieved. We can return to the previous brightness value when the movie ended.

4.7. Staircase Lighting Function

The dimmer offers the function of staircase lighting control besides the normal lighting control.

The staircase lighting function serves to switch off the lighting directly until dimming DOWN to 20% of the brightness value after a set period. It is able to set the brightness of the luminaries, the duration of the light ON, the time to dim down to 20% separately.

In this function, it uses 1 data bit control the targets directly by setting a permanent fixed value to the output of the staircase luminaries.

The steps of staircase lighting control: the staircase luminaries will be switched on for a certain time (this time can be set) if the controlled target receives the message of "1"; these luminaries will be switched on again when receiving another message "1" during this period. The luminaries will be switched off when they are dimmed down to 20% of the brightness value (the dim down time can be set) after this period, or switch off the luminaries by sending message "0" to the controlled target. The luminaries will be off after dimming down to 20% when receiving the message "0" (the same dimming down time as above). When enabling the function "On reception switch OBJ=0 switch off", it is able to use the function "Switch off" to turn off the output in the status of "Permanent on", or change the status from "Switch on" to "Permanent on" (message "1" means ON, "0" means OFF).

4.8. Reset

When the BUS is power off, the current brightness value will be saved to the memory of the dimmer. When the BUS voltage is recovered, the brightness status may be the last brightness value, or the preset brightness value.

When the BUS is power off, it may have the following situation occurring:

In the normal mode, 2 optional behaviors after the BUS voltage recovery are: the last brightness value before power off, or the set value.

In the staircase lighting mode, the behavior after the BUS voltage recovery is: ON or OFF. No output when it is OFF; start the behavior "Switch=1" when it is ON.

4.9. Normal operation signs

1 bit data: The sign will be report periodically to the Bus when the dimmer is working normally.

Chapter 5 Parameters Setting Description in the ETS

5.1. KNX Secure

1-10V Dimming Controller with Secure is a KNX device that complies with the KNX secure standard. That is, you can run the device in safe way.



Fig.5.1 (1) "KNX Secure" parameter window

The device with KNX secure will be displayed notes on ETS, as shown as Fig.5.1(1).

If secure commissioning is activated in ETS project, the following information must be considered during device debugging:



❖ It is essential to assign a project password as soon as a KNX Secure device is imported into a project. This will protect the project against unauthorized access.

The password must be kept in a safe place – access to the project is not possible without it (not even the KNX Association or device manufacturer will be able to access it)!

Without the project password, the commissioning key will not be able to be imported.

❖ A commissioning key is required when commissioning a KNX Secure device (first download). This key (FDSK = Factory Default Setup Key) is included on a sticker on the side of the device, and it must be imported into the ETS prior to the first download:

✧ On the first download of the device, a window pops up in the ETS to prompt the user to enter the key, as shown in Fig.5.1 (2) below.

The certificate can also be read from the device using a QR scanner (recommended).

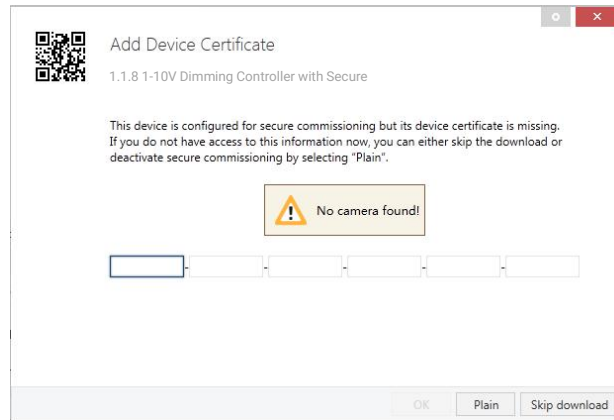


Fig.5.1(2) Add Device Certificate window

- ✧ Alternatively, the certificates of all Secure devices can be entered in the ETS beforehand. This is done on the "Security" tab on the project overview page, as shown in Fig.5.1(3) below. The certificates can be also added to the selected device in the project, as shown in Fig.5.1(4).

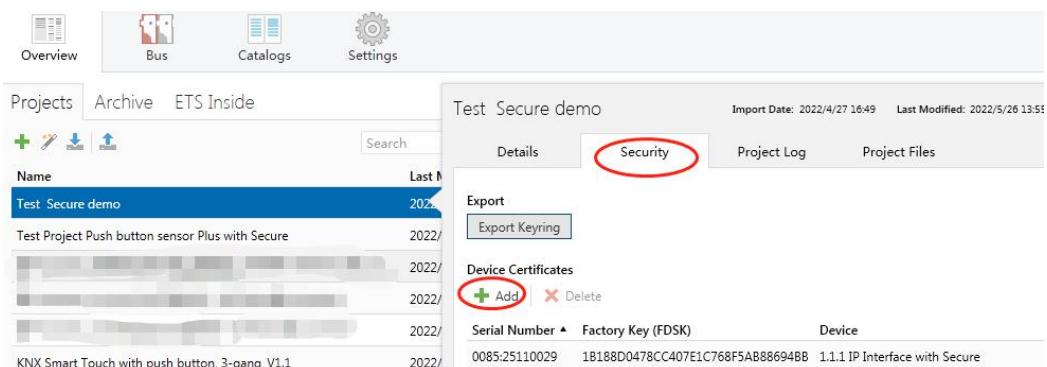


Fig.5.1(3) Add Device Certificate

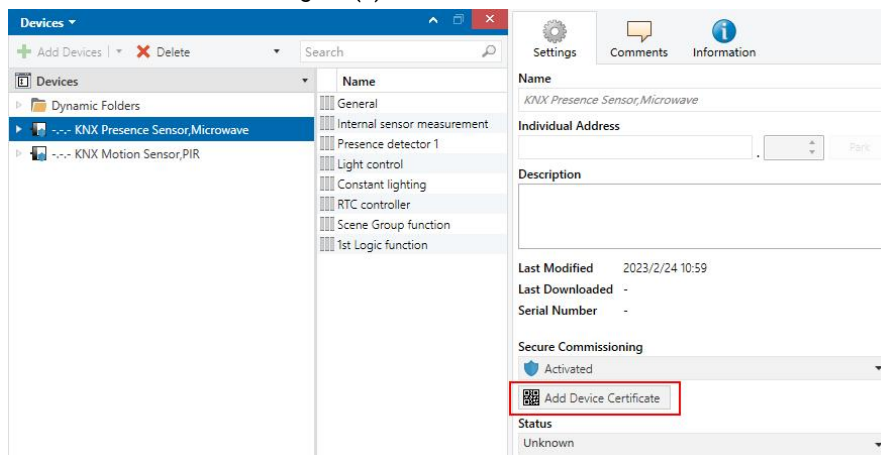


Fig.5.1(4) Add Device Certificate

- ✧ There is a FDSK sticker on the device, which is used for viewing FDSK number. **Without the FDSK, it will no longer be possible to operate the device in KNX Secure mode after a reset.**

The FDSK is required only for initial commissioning. After entering the initial FDSK, the ETS will assign a new key, as shown in Fig.5.1(5) below.

The FDSK will be required again only if the device was reset to its factory settings (e.g. If the device is to be used in a different ETS project).



Fig.5.1(5)

Example:

If this application in the project needs to be tried with another device, it is no longer the original device. When the application is downloaded to a new device, the following prompt will appear on the left of Fig.5.1(6), click yes, the Add Device Certificate window will appear, then enter the initial FDSK of the new device, and you need to reset the device to the factory settings (it is not required if the device is still factory default; If it has been used, it will be required to reset, otherwise the following error message will appear on the right of Fig.5.1(6)), and then the device can be successfully downloaded again.

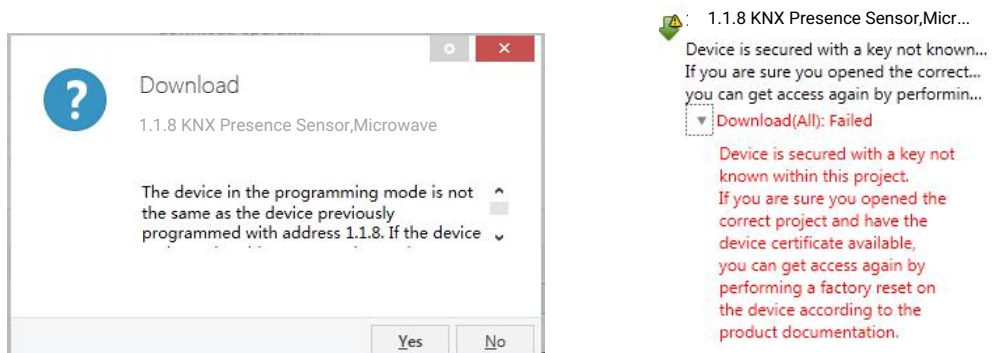


Fig.5.1(6) Example

Whether the device is replaced in the same project, or the device is replaced in a different project, the processing is similar: **Reset the device to the factory settings, then reassign the FDSK.**

After the device is downloaded successfully, the label Add Device Certificate turns gray, indicating that the key for this device has been assigned successfully, as shown in Fig.5.1(7) below.

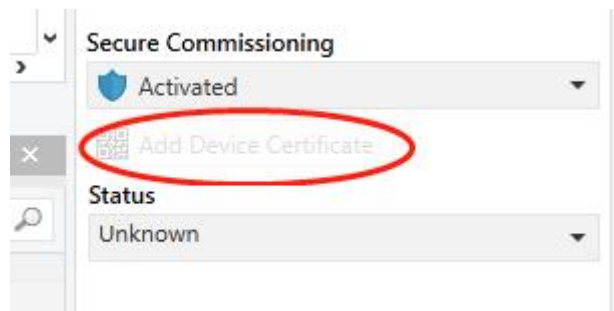


Fig.5.1(7)

ETS generates and manages keys:

Keys and passwords can be exported as needed to the use of security keys outside of the associated ETS projects. As shown in Fig.5.1(8) below, the file extension is .knxkeys.

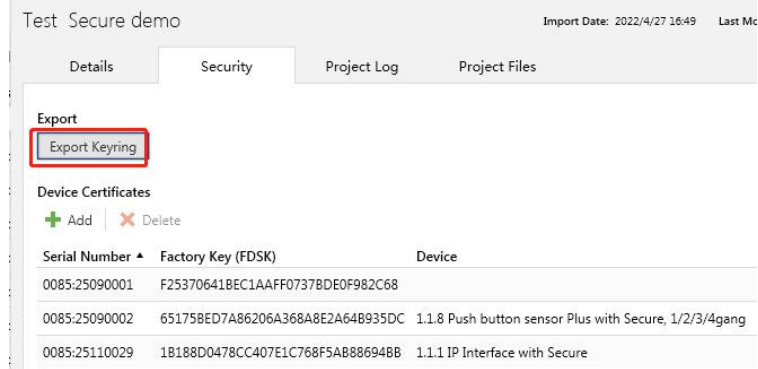


Fig.5.1(8)

Note: Any USB interface used for programming a KNX Secure device must support "long frames".

Otherwise ETS will report a download failure information, as shown below.

5.2. Parameter window "General"

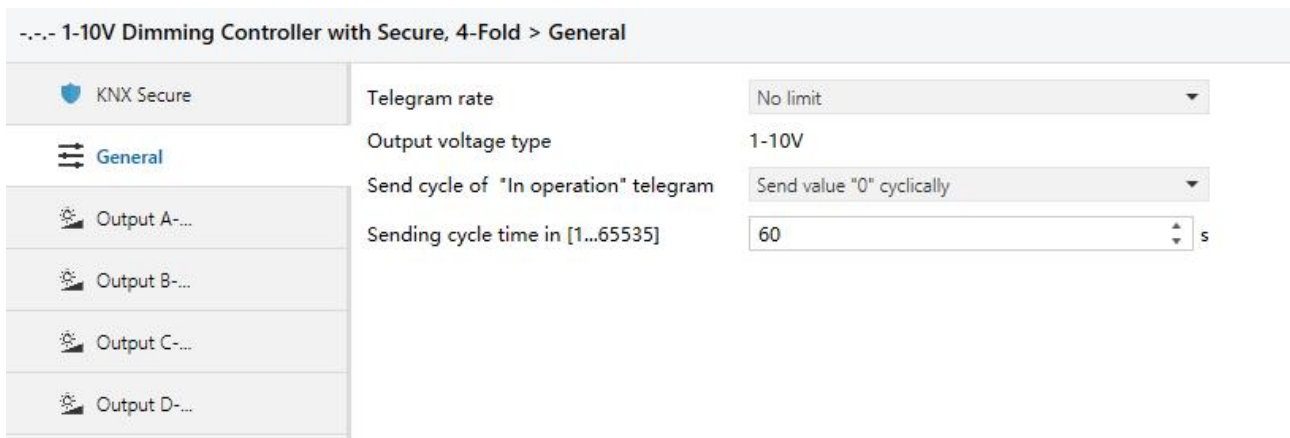


Fig. 5.2 Parameter window "General"

Parameter "Telegram rate"

This command is used to set the frame speed. Options:

No limit

Delay 100ms

Delay 200ms

.....

Delay 700ms

In this system the function of frame speed is unavailable.

Parameter "output voltage type"

This parameter is used to set the output voltage type of dimming controller.

Option is only **1-10V**

Parameter "Send cycle of "In operation" telegram"

This command is used to send messages "1" or "0" to the BUS periodically to check the device whether is working or not. Options:

No

Send value "0" cyclically

Send value "1" cyclically

It will not send any telegram with "No"; and show the following parameters with "Send value '0' cyclically" or "Send value '1' cyclically" to define the time interval of sending telegram.

Parameter "Sending cycle time in s[1...65535]"

This parameter defines the time interval of the telegram to report the normal working condition of the dimmer. Options: **1...65535s**

5.3. Introduction of channel function

2 operation modes (main function) per output for dimmer:

Normal Dimming

This mode is mainly used to control the normal luminaries system, which can set the output time and the brightness value of the dimmer, dim UP or DOWN with the function of "relative dimming", and also call the set brightness values from the scene function, until dim to the required environment.

Staircase Lighting

The mode is mainly used to control the staircase luminaries. Switch ON the staircase luminaries and switch OFF automatically after a certain period, or switch OFF by manually.

5.4. Parameter window "Output X"

The parameter window of "Output X" can be seen in Fig. 5.4, which activate or deactivate the output of Channel X. The "X" in the following text means any one output of the dimmers. The functions are describing as below and all the channels have them same functions setup.

1-10V Dimming Controller with Secure, 4-Fold > Output A...		
KNX Secure	Channel function	<input checked="" type="checkbox"/>
General	Description (max 30char.)	<input type="text"/>
Output A...	Staircase lighting	<input checked="" type="checkbox"/>
A: Staircase lighting	Send brightness status after change	<input type="checkbox"/>
	Send switch status after change	<input type="checkbox"/>

Fig. 5.4 Parameter window "Output X"

Parameter "Channel function"

This parameter is used to set whether to enable channel function.

When enabled, following parameters are visible, which are used to set the working mode, the current brightness status and the switch status report.

Parameter "Description (max. 30char.)"

This parameter is used to set the custom description of channel, up to input 30 characters.

Parameter "Staircase lighting"

This parameter is used to set whether to enable channel function.

When enabled, it is in the status of staircase lighting control, while disabled, it is in the normal dimming control.

Parameter "Send brightness status after change"

This function is used to report the latest brightness value. When enable this function, it will send a frame to the BUS no matter what happen to make the brightness value changed.

When it is disabled, it will not send any report of the current brightness value.

While it is enabled, send a frame to the BUS to report the current brightness value no matter what happens to make the brightness value changed.

Note: if it is enabled, the object "Brightness status" and object "Brightness dimming" cannot be linked together by a same group address, or lead to the device internal loop-back, and enter into endless loop, to make the bus system crash.

Parameter "Send switch status after change"

This function defines whether report the switch status to the BUS when the setup object "Switch" is changed. Send "1" to the BUS when the current brightness value is greater than 0; send "0" when the value is equal to 0.

When it is disabled, it will not send any report of the current switch status.

While it is enabled, send a status changed report of switch to the BUS.

Note: if it is enabled, the object "Switch status" and object "Switch" cannot be linked together by a same group address, or lead to the device internal loop-back, and enter into endless loop, to make the bus system crash.

5.5. Parameter window "Normal Dimming"

5.5.1. Parameter window "X: Dimming general"

Fig. 5.5.1 Parameter window "X: Dimming general"

Parameter "Time duration of dimming [1...255]"

It is used to set the dimming time duration. Options: **1...255 *2s**

No matter it is Brightness dimming or Switch dimming, when choosing the dimming time duration for Dimming on or Dimming off.

Parameter "Switch on brightness value"

It is used to select the brightness value is the last one or the preset one when using the Switch mode to switch on the luminaries. Options:

Preset brightness value

Last brightness value

The option "Preset brightness value" means the brightness value is the preset value when switching on the luminaries by Switch mode. When the brightness low threshold value is greater than the switch preset value, the brightness value of the luminaries is the low threshold value after switching on; when the switch preset value is greater than the high threshold, the brightness value is the high threshold one after switching on. The high and low threshold of the brightness are shown in the parameter window "X: Dimming", see Fig. 5.5.2.

The option "Last brightness value" means the brightness value is the last status' value which is not equal to 0. If the behavior of switching on the luminaries in Switch mode after the BUS reset, and the luminaries during BUS reset are off, so the brightness value is the default brightness value 128; Other cases, the brightness value is the last status' value which is not equal to 0 on Switching mode.

Parameter "Preset switch on brightness [1...100]"

It is used to set the brightness value when switch on the luminaries in Switch mode, with the setting range: **1...100 %**

Parameter "Dimming mode selection for switch on"

It shows the time duration to switch on the luminaries in Switch mode. Options:

Dimming on

Switch on softly

The option "Dimming on" means the switch dimming time is set by the parameter "Time duration of dimming time". Then option "Switch softly" means the default dimming time is 4s.

Parameter "Dimming mode selection for absolute dimming"

It is used to set the brightness value in the Brightness dimming mode. Options:

Dimming on

Switch on softly

The option "Dimming on" means the brightness dimming time is set by the parameter "Time duration of dimming time". Then option "Switch softly" means the default dimming time is 4s.

Parameter "Dimming mode selection for switch off"

It shows the time duration to switch off the luminaries in switch dimming mode. Options:

Dimming off

Switch off softly

Switch off instantly

The option "Dimming off" means the switch dimming time is set by the parameter "Time duration of dimming time". The option "Switch softly" means the default dimming time is 4s. The option "Switch off instantly" means the luminaries are switch off immediately.

Parameter "Behavior after bus recovery"

It means in the Normal Dimming, the behavior after the BUS reset is the brightness value before power off or the preset value. Options:

Preset brightness value

Last brightness value

The option "Preset brightness value" means the brightness value after the BUS power recovers is the input preset brightness value in the "Bus recover preset brightness value". If the input preset value is smaller than the low threshold, the value after the BUS power recovery is the low threshold; if the preset input value is greater than the high threshold, the value after the BUS power recovery is the high threshold. The high and low threshold are shown in the parameter window "X: Dimming", see Fig.5.5.2.

The option "Last brightness value" means the brightness value is the last value before power off after BUS power recovery. It also carry out a bus reset operation after downloading the parameters.

Parameter "Preset brightness value[0...100]"

It is used to set the brightness value during the BUS power recovery, and the range is **0...100 %**

5.5.2. Parameter window "X: Dimming"

--- 1-10V Dimming Controller with Secure, 4-Fold > Output A-... > A: Dimming

<div> <div>KNX Secure</div> <div>General</div> <div>Output A-...</div> <div>A: Dimming general</div> <div>A: Dimming</div> <div>A: Scene</div> <div>A: Preset</div> <div>Output B-...</div> <div>Output C-...</div> <div>Output D-...</div> </div>	<p>Relative dimming</p> <p>Low dimming threshold 1~127 (0.4%~49.9%) <input type="text" value="1"/></p> <p>Upper dimming threshold 128~255 (50.2%~100%) <input type="text" value="255"/></p> <p>If dimming down and value <=low dimming threshold output switch <input checked="" type="radio"/> Off <input type="radio"/> To low threshold value</p> <p>Output switch on after receipt of dimming up telegram <input checked="" type="checkbox"/></p> <hr/> <p>Absolute dimming</p> <p>Low dimming threshold 1~127 (0.4%~49.9%) <input type="text" value="1"/></p> <p>Upper dimming threshold 128~255 (50.2%~100%) <input type="text" value="255"/></p> <p>If output on: receipt of "Brightness value=0" output switch <input checked="" type="radio"/> Off <input type="radio"/> To low threshold value</p> <p>Output switch on after receipt of "brightness value">=1 <input checked="" type="checkbox"/></p>
---	---

Fig. 5.5.2 Parameter window "X: Dimming"

This window is used to set the parameters in the brightness dimming mode. There are 2 type of brightness dimming mode: Relative dimming and Brightness value:

Relative Dimming

Parameter "Low dimming threshold 1~127 (0.4%...49.9%)"

This parameter defines the low threshold value of the relative dimming. When it is smaller than the low threshold, it is not allowed to dim DOWN, only to dim UP, the range is 1~127 (0.4%~49.9%).

Supposing the low threshold is 50, if the current brightness value is smaller than 50, so it is not allowable to dim DOWN until dimming UP to above 50.

Parameter "Upper dimming threshold 128~255 (50.2%...100%)"

This parameter defines the high threshold value of the relative dimming. When it is greater than the high threshold, it is not allowed to dim UP, only to dim DOWN, the range is 128~255 (50.2%~100%).

Supposing the high threshold is 200, if the current brightness value is greater than 200, it is not allowable to dim UP until dim DOWN to below than 200.

Parameter "If dimming down and value <=low dimming threshold output switch"

This parameter defines the action after relative dimming, whether it will be off or stay in the low threshold value. Options:

Off

To low threshold value

Supposing the low threshold is 50. If it is "Off", it will switch off the luminaries when dim DOWN to 50; if it is "To low threshold value", the value of the luminaries will remain the same even when dimming DOWN to 50.

However, no matter whether it is "Off" or "To low threshold value", if the low threshold of the relative dimming is smaller than that of the brightness, it will switch off the luminaries automatically when dimming DOWN to the low threshold of the brightness value; if the high threshold of the brightness is less than relative high threshold, it is only possible to dim UP to the high threshold of the brightness. (The high and low threshold value will limit the total brightness value of the dimmer, see more details in the below description.)

Parameter "Output switch on after receipt of dimming up telegram"

It tells that whether it is possible to switch on the luminaries when receiving the "*Dimming up*" message from Relative dimming if the output is 0.

Supposing the current output is 0. If it is disabled, the output still remains 0 even when the target receives the message "Dimming UP"; if it is enabled, it will dim the luminaries to the modified value when receiving the "Dimming up" message.

If the value after dimming up is smaller than the brightness low threshold, it will be dimmed to the low threshold directly. If the value after dimming up is greater than the brightness high threshold, it will be dimmed to the high threshold directly.

Absolute dimming

The high and low threshold value limits the high and low output value. It is not allowed to change the brightness value if it is beyond the high and low threshold which will be invalid. For example, in Fig. 5.5.2 the value is set as 1~255.

If the low threshold value is set as 50 and the high threshold is 200, the brightness value "210" will be invalid. The luminaries will be dimmed from the low threshold directly when the brightness value goes up from 0; the luminaries will be dimmed from the high threshold directly when the brightness values goes down from 255.

Parameter "Low dimming threshold 1~127 (0.4%...49.9%)"

This function defines the low threshold of the dimmer, and the range is 1~127. It is going to start dimming from the low threshold. Supposing the current brightness value is 0; the low threshold is 50 and the high threshold is 200. If receiving the message "30", the brightness value will go to 50 directly without gradual change; if receiving the message "60", so the brightness value will first go to 50 and then go up to 60 gradually; if the current value is 100 and the target value is 30, so the value will go from 100 to 50 and the brightness value is 50.

Parameter "Upper dimming threshold 128~255 (50.2%...100%)"

This function defines the high threshold of the dimmer, and the range is 128~255. Supposing the low threshold is 50, and the high threshold is 200. If the input brightness value is greater than 200, it will go to 200 directly.

Parameter "If output on : receipt of "brightness value=0"output switch"

This function defines it is available or not to switch off the output by the defined brightness value "0".Options:

Off

To low threshold value

The option "Off" means the output is 0 when the brightness value is 0.The option "To low threshold value" means the output is the low threshold when the value is 0.

Parameter "Output switch on after receipt of "brightness value">=1"

This function defines it is available or not to switch on the output by brightness dimming mode when the output is 0.

When it is disabled, the dimmer remains the output "0" when receiving the message of 100 if the output is 0. While it is enabled, the output is the input brightness value when the receiving value is greater or equals to 1; if the input brightness value is smaller than the brightness low threshold, the output is the brightness low threshold.

5.5.3. Parameter window "X: Scene page"

1-10V Dimming Controller with Secure, 4-Fold > Output A-... > A: Scene

<div> <div>KNX Secure</div> <div>General</div> <div>Output A-...</div> <div>A: Dimming general</div> <div>A: Dimming</div> <div>A: Scene</div> <div>A: Preset</div> <div>Output B-...</div> <div>Output C-...</div> <div>Output D-...</div> </div>	<div>Scene function <input checked="" type="checkbox"/></div> <div>Number of scene assignment 3</div> <div>Dimming mode selection for scene 1 <input checked="" type="radio"/> Dimming on <input type="radio"/> Switch on softly</div> <div>Scene 1 duration [1...255] 1 *2s</div> <div>Scene 1 brightness value [0...100] 100 %</div> <div>Assignment to Scene number[1...64] No assignment</div> <div>Dimming mode selection for scene 2 <input checked="" type="radio"/> Dimming on <input type="radio"/> Switch on softly</div> <div>Scene 2 duration [1...255] 1 *2s</div> <div>Scene 2 brightness value [0...100] 100 %</div> <div>Assignment to Scene number[1...64] No assignment</div> <div>Dimming mode selection for scene 3 <input checked="" type="radio"/> Dimming on <input type="radio"/> Switch on softly</div> <div>Scene 3 duration [1...255] 1 *2s</div> <div>Scene 3 brightness value [0...100] 100 %</div> <div>Assignment to Scene number[1...64] No assignment</div>
---	--

Fig. 5.5.3 parameter window "X: Scene page"

This parameter shown in Fig. 5.5.3 defines the scene function, totally 15 scenes from 1 to 15. It is able to set 15 scenes simultaneously and call any one of them by control panel when needed.

Parameter "Scene function is"

The function defines the enable or disable of the scene function.

When it is enabled, following parameters is visible:

Parameter "Number of scene assignment"

This function is used to set the count of scene assignment, up to 15 scenes. Options:

1
2
...
15

The setting parameters for the other 15 scenes are shown as below:

Parameter "Dimming mode selection for scene 1" (Y=1~15)

The function defines the dimming mode of the set scene. Y means the scene that needs setting, 1~15. The Y shown as below has the same meaning. Options:

Dimming on

Switch on softly

The option "Dimming on" means the set scene dimming time is the set set by the parameter "Scene Y duration". The option "Switch on softly" means the scene dimming time is the default time "4S".

Parameter "Scene Y duration [1...255]"

This function defines the dimming time of the set scene. Options: **1...255 *2s**

Parameter "Scene Y brightness value [0...100]"

This function defines the brightness value of the set scene, range: **0...100 %**

Parameter "Assignment to Scene number[1...64]"

This function distributes the scene number of the set scene that means the communication object "Scene/save" will call the scene by the allocated scene number. Options:

No assignment

Scene 1

Scene 2

.....

Scene 64

Note: the parameter setting option is 1~64 scene number or unallocated.

5.5.4. Parameter window "X: Preset"

The screenshot displays the 'X: Preset' parameter window for a 1-10V Dimming Controller. The interface is divided into a left sidebar and a main content area. The sidebar contains a tree view with the following items: 'KNX Secure', 'General', 'Output A-...', 'A: Dimming general', 'A: Dimming', 'A: Scene', 'A: Preset' (highlighted), 'Output B-...', and 'Output C-...'. The main content area is titled '1-10V Dimming Controller with Secure, 4-Fold > Output A-... > A: Preset'. It contains two sections, one for 'Preset 1' and one for 'Preset 2'. Each section includes: a 'Preset X function' checkbox (checked with a green checkmark), a 'Dimming mode selection for preset' with two radio buttons ('Dimming on' is selected), and two 'Brightness value at obj=0 [1...100]' and 'Brightness value at obj=1 [1...100]' input fields, both containing the value '100' and a '%' symbol. Below these is a 'Preset X can be changed via bus' checkbox (unchecked).

Fig. 5.5.4 parameter window "X: Preset"

It is able to set the brightness value in "X: Preset" shown in Fig. 5.5.4. There are two preset objects per output: "Preset 1" and "Preset 2" which are used to realize the lighting control.

It is also able to save the current brightness status as the new preset value. These 2 preset values have the same parameters setup, so here take one as an example.

Parameter "preset 1 function"

This parameter is used to activate preset 1. When it is enabled, following parameters are visible:

Parameter "dimming mode selection for preset"

This parameter defines the time when starting the dimming by "Preset 1", and there is 1 bit data to control "X preset 1": "0" and "1", which is able to call 2 different brightness values. Options:

Dimming on

Switching on softly

When select "Dimming on", the dimming time of object "X preset 1" is the input time of "Time duration of dimming time"; When select "Switching on softly", the dimming time of "Preset1" is the default value: 4 seconds.

Parameter "Brightness value at obj=0 [1...100]"

This parameter defines the brightness value when receiving "0" by "Preset 1". Option: **1...100 %**

Parameter "Brightness value at obj=1 [1...100]"

This parameter defines the brightness value when receiving "1" by "Preset 1". Option: **1...100 %**

Parameter "preset 1 can be changed via bus"

This parameter defines whether to change the preset value.

It is able to change the preset value when enabled, and also start the communication object "Set preset 1", which is used to save the current switch status as the new preset value.

It will save the current brightness status to the "Brightness value at obj=0" and replace that value with "0"; will save the current brightness status to the "Brightness value at obj=1" and replace that value with "1".

5.6. Parameter window "Staircase Lighting"

It is able to set the parameters of staircase lighting mode in Fig. 5.6.

1-10V Dimming Controller with Secure, 4-Fold > Output A-... > A: Staircase lighting

KNX Secure	Duration of staircase lighting : Base	1.0s
General	Duration of staircase lighting : Factor (Duration=Base*Factor)	1
Output A-...	Time for dimming down to 20% [1...255]	1 *2s
A: Staircase lighting	Brightness value for staircase lighting [20...100]	100 %
Output B-...	Staircase lighting after bus recovery	<input checked="" type="radio"/> Switch off <input type="radio"/> Switch on
Output C-...	Staircase value at permanent-on [20...100]	100 %
Output D-...	Switch off after receipt telegram "0"	<input type="checkbox"/>

Fig. 5.6 parameter window "X: Staircase lighting"

Parameter "Duration of staircase lighting : Base"

Set the time of Base: **1.0 s / 2.1 s / ... / 1.1 min / ... / 1.2 h**

Parameter "Duration of staircase lighting : Factor"

Set the time of factor: **1...127**

When switch on the staircase luminaries by "Switch" mode, the ON duration time is: Duration = Base * Factor. It will switch off the luminaries when the brightness goes down to 20% gradually after the ON duration time.

Parameter "Time for dimming down to 20% [1...255]"

This function defines the time that the brightness value of the staircase lamps goes down to 20%:

1...255 *2s

The luminaries will be switched off when the brightness value of the staircase goes down to 20%.

Parameter "Brightness value for staircase lighting [20...100]"

The function defines the brightness value of the staircase when switching on the luminaries by "Switch" mode. Options: **20...100 %**

Parameter "Staircase lighting after bus recovery"

The function defines the status of the staircase luminaries after the BUS power recovery. Options:

Switch on

Switch off

The option "Switch on" means switch on the staircase luminaries after the BUS power recovery; Duration = Base * Factor. It is to use the parameter "Time for dimming down to 20%" to set the DOWN time.

The option "Switch off" means switch off the staircase lamps after the BUS power recovery.

Parameter "Staircase value at permanent-on [20...100]"

The function defines the output status of the staircase luminaries as a fixed brightness value.

Options: **20...100 %**

It will not switch off the staircase luminaries without receiving the OFF message from "Permanent on". "Permanent on" is another output mode of the staircase luminaries. The DOWN time of turning off the luminaries is set by the parameter "Time for dimming down to 20%". It will switch off the luminaries when going down to 20%.

Parameter "Switch off after receipt telegram '0'"

When enabled, it is able to send off command out by "Switch" no matter in switch or permanent on mode;

When disabled, only stop outputting "Permanent on" by using "Permanent on" to send OFF command in the "Permanent on" lighting mode.

Note: In the Switch output mode, it can start the "Permanent on" output mode, but can't be performed the close operation of "Permanent on" when you did not start the "Permanent on" output mode.

Chapter 6 Communication Object Description

Communication object is the media of devices on the bus communicate with other device, that is, just communication object can communicate with the BUS. The role of each communication objects as following.

Note: "C" in "Flag" column in the below table means that the object has a normal link to the bus; "W" means the object value can be modified via the bus; "R" means the value of the object can be read via the bus; "T" means that a telegram is transmitted when the object value has been modified; "U" means that value response telegrams are interpreted as a write command, the value of the object is updated.

6.1. Communication object of "General"

There is 1 communication object in "General" in Fig.6.1 and functions are shown in table 6.1.

Number	Name	Object Function	Description	Group Address	Length	C	R	W	T	U	Data Type	Priority
45	General	In operation			1 bit	C	R	-	T	-	switch	Low

Fig. 6.1 Communication object of "General"

No.	Function	Name	Data Type	Flags	DPT
45	In operate	In operate	1bit	C, T	1.001 switch
<p>This object is used to declare the working condition by sending "1" or "0" to the bus cyclically, which is enabled when selecting "send value '0' cyclically" or "send value '1' cyclically" in the parameter "Send object 'in operation'" and disabled when selecting "no". It will send "0" with option "send value '0' cyclically" and "1" with "send value '1' cyclically".</p>					

Table 6.1 Communication object table of Device General

6.2. Dimming general communication object

Number	Name	Object Function	Description	Group Address	Length	C	R	W	T	U	Data Type	Priority
1	Output A-...	Switch			1 bit	C	-	W	-	-	switch	Low
2	Output A-...	Switch, status			1 bit	C	R	-	T	-	switch	Low
3	Output A-...	Relative dimming			4 bit	C	-	W	-	-	dimming control	Low
4	Output A-...	Brightness dimming			1 byte	C	-	W	-	-	percentage (0..100%)	Low
5	Output A-...	Brightness, status			1 byte	C	R	-	T	-	percentage (0..100%)	Low

Fig. 6.2 General communication object for each channel

No	Function	Name	Data Type	Flags	DPT
1	Switch	Output A-{{...}}	1bit	C,W	1.001 switch
<p>This object is used to receive the switch command to switch the dimmer actuator. It will switch on the dimmer actuator with "1", off with "0".</p> <p>The name in parentheses changes with the parameter "Description (max.30 char.)". If description is empty, display "Output A-..." by default. The same below.</p>					
2	Switch status	Output A-{{...}}	1bit	C,R, T	1.001 switch
<p>This object is used to report the status of the current switch to the bus. The dimmer will send "1" to the bus when the value of the brightness is larger than 0, "0" to the bus with value of "0".</p> <p>The object will be enabled when selecting "It is new status" in the parameter "Send switch status after change".</p>					
3	Relative dimming	Output A-{{...}}	4bit	C,W	3.007 dimming control
<p>This object is used to dim up or down the outputs. It will dim down when the input value is from 1 to 7. During this range, smaller amplitude of dimming down with larger value; that means it will dim down to the biggest amplitude with 1, while to the smallest amplitude with 7, and 0 means stop dimming down.</p> <p>It will dim up when the input value is from 9-15. During this range, smaller amplitude of dimming up with larger value; that means it will dim up to the biggest amplitude with 9, while to the smallest amplitude with 15, and 8 means stop dimming up.</p>					
4	Brightness dimming	Output A-{{...}}	1byte	C,W	5.001 percentage(0..100%)
<p>It is used to receive the brightness value to switch the dimmer actuator, switching on the actuator when the received value is larger than 0, off or stay to the lower threshold value with "0", which is defined by the parameter setup in the brightness value dimming.</p>					
5	Brightness status	Output A-{{...}}	1byte	C,R,T	5.001 percentage(0..100%)
<p>This object is used to send the brightness status of the current output to the bus whatever causes the changes of the value.</p> <p>The object will be enabled when selecting "Transmit new brightness" in the parameter "Brightness value OBJ transmit after dimming".</p>					

Table 6.2 General communication object table for each channel

6.3. Scene communication object

Number	Name	Object Function	Description	Group Address	Length	C	R	W	T	U	Data Type	Priority
7	Output A-...	Scene/save			1 byte	C	-	W	-	-	scene control	Low

Fig.6.3 Scene function communication object

No.	Function	Name	Data type	Flag	DPT
7	Scene /save	Output A-{{...}}	1Byte	C,W	18.001 scene control
<p>This object is used to send an 8bit command to transfer or save the scene. This object is opening when on enable scene function. The mean of 8bit as following:</p> <p>Set up an 8bit command (binary code) as: FXNNNNNN</p> <p>F: "0" transfer scene; F: "1" save scene;</p> <p>X: Un-used, not affect the results;</p> <p>NNNNNN: scene number (0...63)</p> <p>The parameter setup is 1-64.</p>					

Table 6.3 Scene function communication object

6.4. Preset Value communication object

8	Output A-...	Preset 1	1 bit	C - W - - scene	Low
9	Output A-...	Set preset 1	1 bit	C - W - - scene	Low
10	Output A-...	Preset 2	1 bit	C - W - - scene	Low
11	Output A-...	Set preset 2	1 bit	C - W - - scene	Low

Fig.6.4 Preset value function communication object

No.	Function	Name	Data type	Flag	DPT
8	Preset 1	Output A-{{...}}	1bit	C,W	1.022 scene
<p>It is the communication object of preset 1 and call the preset value. When the object receives the logical value of "0", the brightness value of dimming is defined by "Brightness value at obj=0"; when the object receives the logical value of "1", the brightness value of dimming are defined by "Brightness value at obj=1".</p> <p>This object will be started after activating Preset 1.</p>					
9	Set preset 1	Output A-{{...}}	1bit	C,W	1.022 scene
<p>This object is used to modify brightness value of preset1. It will start the parameter "Preset 1 can be set via the bus" is enabled.</p> <p>Via this object can save current brightness status as new preset value. It will save the current brightness value to "Brightness value at obj=0" with "0", that is to replace the is value; It will save the current brightness value to "Brightness value at obj=1" with "1", that is to replace the is value.</p>					
10	Preset 2	Output A-{{...}}	1bit	C,W	1.022 scene
<p>It is the communication object of preset 2 and calls the preset value. When the object receives the logical value of "0", the brightness value of dimming are defined by "Brightness value at obj=0"; when the object receives the logical value of "1", the brightness value of dimming is defined by "Brightness value at obj=1".</p> <p>This object will be started after activating preset 2.</p>					
11	Set preset 2	Output A-{{...}}	1bit	C,W	1.022 scene
<p>This object is used to modify brightness value of preset 2. It will start the parameter "Preset 2 can be set via the bus" is enabled.</p> <p>Via this object can save current brightness status as new preset value. It will save the current brightness value to "Brightness value at obj=0" with "0", that is to replace the is value; It will save the current brightness value to "Brightness value at obj=1" with "1", that is to replace the is value.</p>					

Table 6.4 Preset value function communication object

6.5. Staircase Lighting communication object

Number	Name	Object Function	Description	Group Address	Length	C	R	W	T	U	Data Type	Priority
1	Output A-...	Switch			1 bit	C	-	W	-	-	switch	Low
6	Output A-...	Permanent on			1 bit	C	-	W	-	-	switch	Low

Fig. 6.5 Staircase Lighting Function communication object

No.	Function	Name	Data Type	Flag	DPT
1	Switch	Output A-{{...}}	1bit	C, W	1.001 switch
<p>The communication object is used to switch the staircase light function of dimmer. It will switch off the staircase lighting after a certain on time, and the starting staircase lighting time are defined by "Duration of staircase lighting: Base" and "Duration of staircase lighting: Factor" and lights on duration is: Duration = Base * Factor. It will be off automatically after some time. It will switch off the lights with "0".</p>					
6	Permanent on	Output A-{{...}}	1bit	C,W	1.001 switch
<p>The object receives the logical value "1" to open staircase light for a long time, receives the logical value "0" to end the staircase light.</p>					

Table 6.5 Staircase Lighting Function communication object